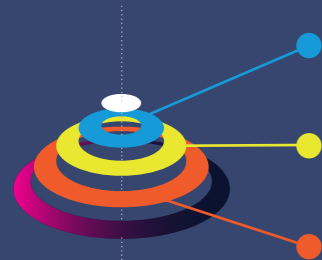


CEAL PROCESS MAP



Community-based This blue circle represents the creation of a community base. Use the 'blue' activities to inspire participation, enable group decision-making and to get projects off the ground. The activities in this circle build and strengthen a sense of collective power.

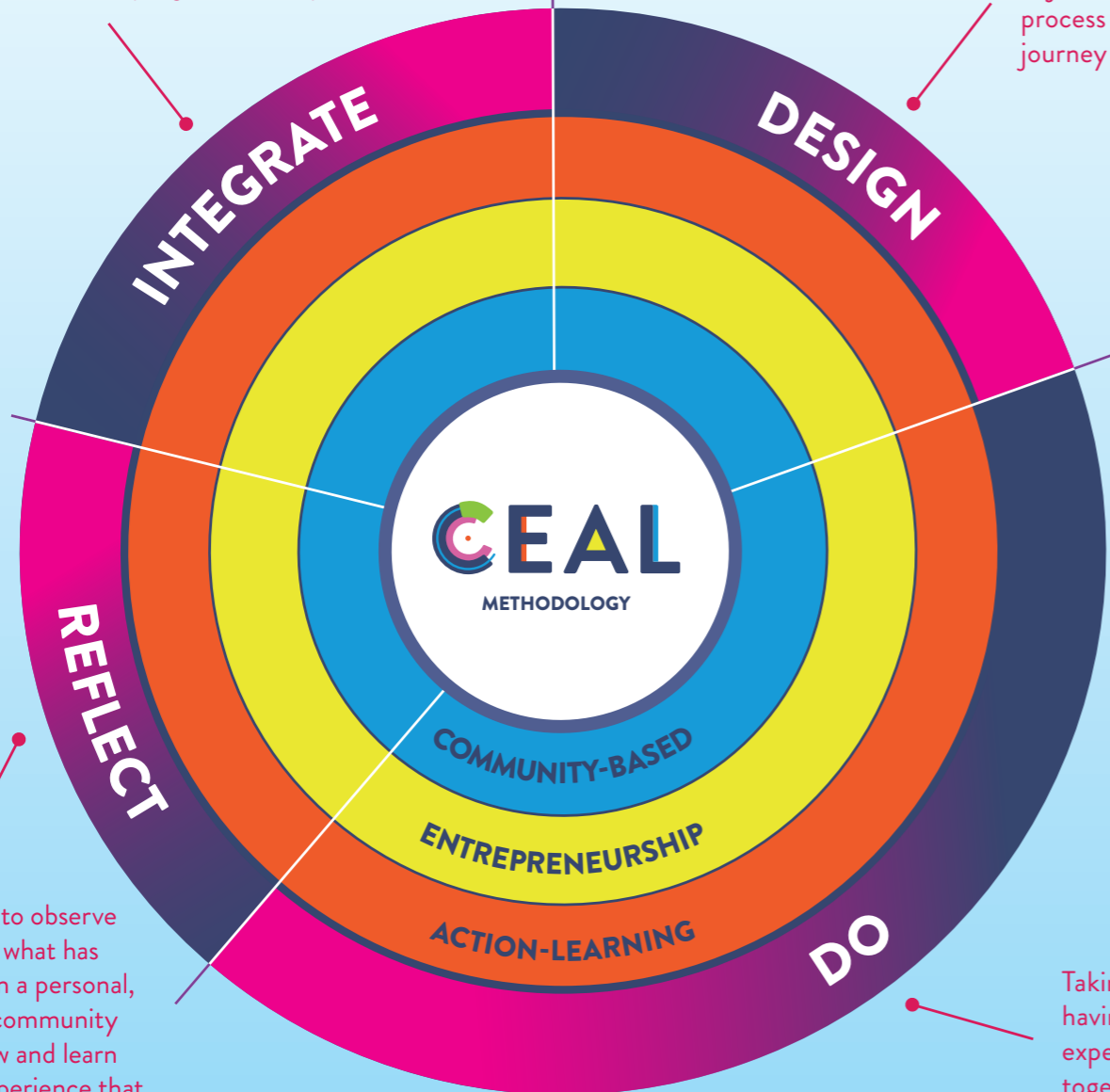
Entrepreneurship This yellow circle represents entrepreneurship. Use the activities in this section to increase the capacity, understanding and application of entrepreneurial skills among participants and community-members alike. In order to be sustainable, CEAL projects aim to generate income or to create a value-exchange for another service or product.

Action-Learning This Circle and the colour red throughout the guide represents 'learning by doing'. Use the red activities to help the learning-process on a personal and group level. Action-learning implies that there is the opportunity for learning throughout all the CEAL experiences and activities. Through observation, reflection and dialogue, the people involved can be made aware of the transformative learning experience they are having.

Drawing conclusions from the reflection process. Integrating and applying the lessons learned to the following phases of the program and beyond.

START CYCLE PROCESS

Planning the project or action based on the objectives, with the process and learning journey in mind.



Taking time to observe and process what has happened on a personal, group, and community level. Review and learn from the experience that has taken place.

Taking action and having the concrete experience of working together to achieve objectives.

WHAT IS THE MAP FOR ?

This CEAL-program design map supports you to design your own CEAL-program. Use it to plan your activities using the CEAL-activity cards. Together with the tips&tricks and the case studies presented in this guidebook, you will have a basis on which to select the most appropriate activities to create your program. This map enables you and your partners to co-design a program in a visual and practical way. Use the CEAL guide to design a program to suit your context and needs.

CEAL PHASES

With the supporting tools you can create a program based on this process-outline. At a minimum, a CEAL-program needs to go through the following phases:



HOW TO USE THE CEAL-PROCESS-DESIGN PACK



Envision

Open and study the CEAL model and decide the focus of your program.



Deepen

Read the guide and consider the tips&tricks.



Design

Make a timeline, drawing 3 parallel lines (for community, enterprise and entrepreneurship) and the learning-cycle phases.



Plan you program

Fill in your timeline with the downloadable activity cards.



Prepare

Find and decide which facilitation tools you will use from the tool sheets (And perhaps incorporate other tools of your own).